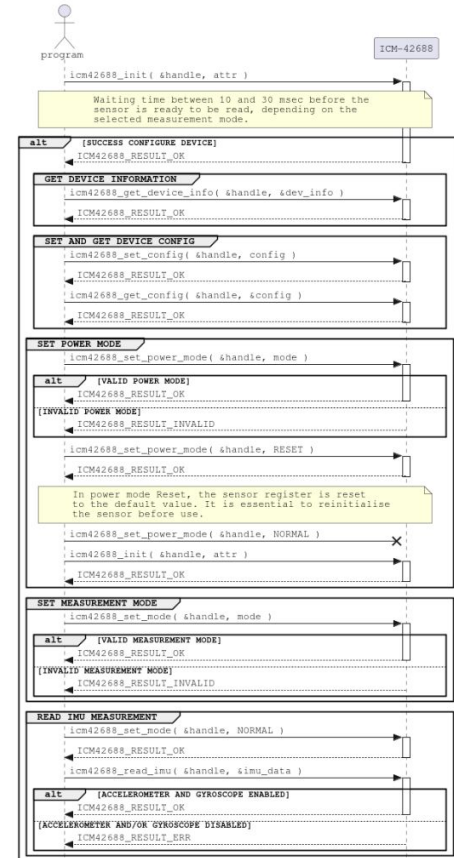


```

icm42688_result_t icm42688_init( icm42688_handle_t*, icm42688_attr_t )
icm42688_result_t icm42688_get_device_info( icm42688_handle_t*, icm42688_dev_info_t* )
icm42688_result_t icm42688_set_config( icm42688_handle_t*, icm42688_attr_t )
icm42688_result_t icm42688_get_config( icm42688_handle_t*, icm42688_attr_t* )
icm42688_result_t icm42688_set_power_mode( icm42688_handle_t*, icm42688_power_mode_t )
icm42688_result_t icm42688_set_mode( icm42688_handle_t*, icm42688_mode_t )
icm42688_result_t icm42688_read_imu( icm42688_handle_t*, icm42688_imu_data_t* )
icm42688_result_t icm42688_read_temp( icm42688_handle_t*, float* )
    
```

☆ **DRV_TDK_ICM42688** Passed Last analysis: 31 seconds ago

🐛 Bugs	🔒 Vulnerabilities	🔥 Hotspots Reviewed	👤 Code Smells	Coverage	Duplications	Lines
0 A	0 A	- A	0 A	85.7% C	0.0% C	1.8k S C



Accelerometer APIs

```
icm42688_result_t icm42688_read_accel( icm42688_handle_t*, icm42688_accel_data_t* )
icm42688_result_t icm42688_calibrate_accel( icm42688_handle_t*, size_t, icm42688_accel_offset_t* )
icm42688_result_t icm42688_accel_self_test( icm42688_handle_t* )
```

Gyroscope APIs

```
icm42688_result_t icm42688_read_gyro( icm42688_handle_t*, icm42688_gyro_data_t* )
icm42688_result_t icm42688_calibrate_gyro( icm42688_handle_t*, size_t, icm42688_gyro_offset_t* )
icm42688_result_t icm42688_gyro_self_test( icm42688_handle_t* )
```

